



Is It Better?

Building West Toronto Sub-Region Relationships Between Primary and Community Care

Dr. Don Smith, Primary Care Clinical Lead
Deb Egan, Home and Community Care Director
West Toronto Sub-Region



Diogenes of Sinope

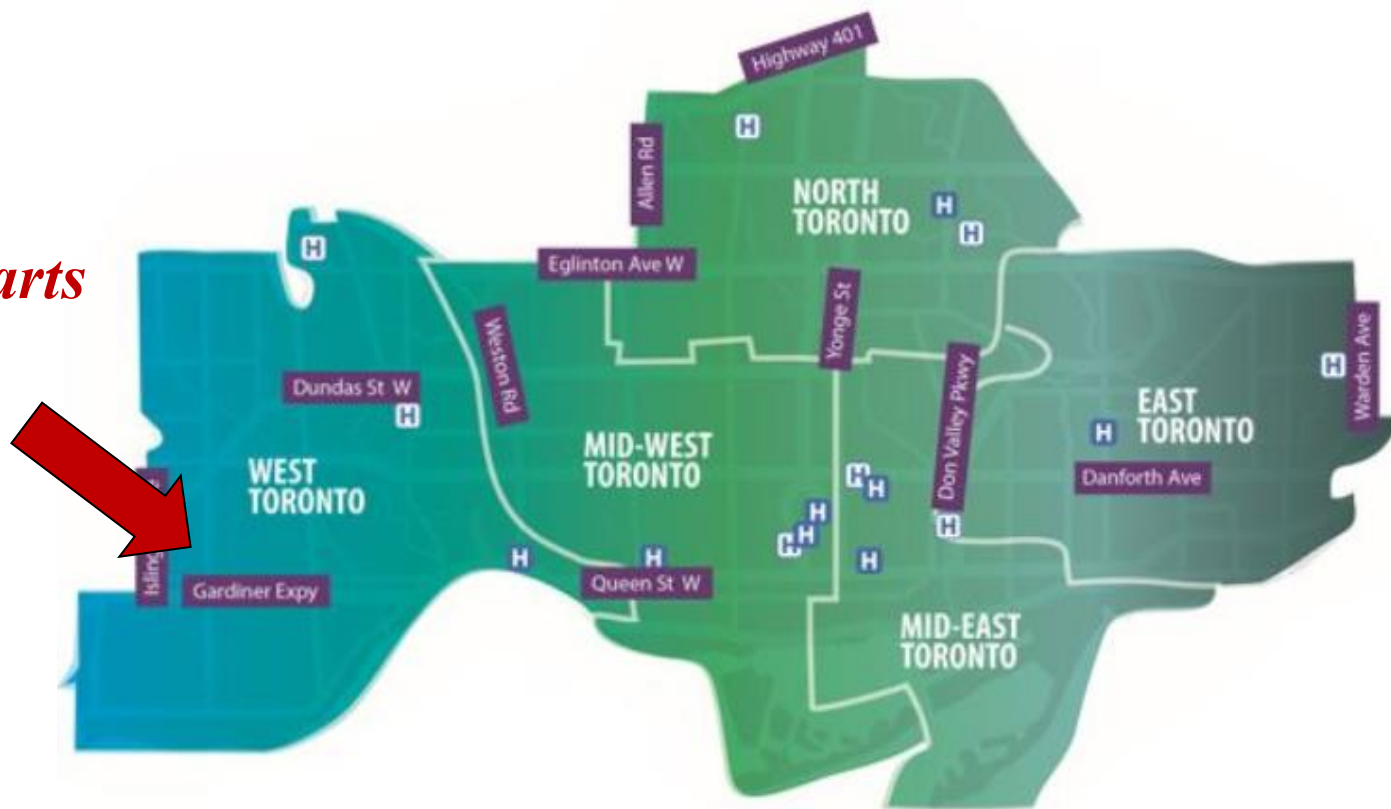
A Philosopher's Tale



What about the West Toronto Sub-Region?

No data without stories, and no stories without data

*Better starts
here ...*



Link to [West Toronto Sub-Region Page](#)
at Toronto Central LHIN Website

Primary and Community Care Committee as a Key Local System Influencer

Committee Purpose: To advance the integration of primary care in each sub-LHIN region within the Toronto Central LHIN.

5 Strategic Priorities:

1. Attachment, Access and Continuity
2. Access to Inter-professional Teams
3. Access to Specialist Consultations
4. Discharge Planning
5. Secure Communication



Note: The Primary and Community Care Committee role is expected to change over time as LHIN and Ministry decisions evolve regarding sub-region plans.

Who's at the Table?

Physician Reps

Community Health Centre
Family Health Organization *
Walk-in Clinic
Solo Physicians
Family Health Team

Primary Care Team

Primary Care Clinical Lead
Primary Care Manager
Health Links Project Manager
Primary Care Project Manager

Community Reps

Community Support Services
Mental Health & Addictions
CCAC

Hospital Reps

Chief of Family Medicine
Clinical Vice President

* Representative pending

West Toronto Health Link Priority Initiatives

- 1. St. Joseph's Health Centre Primary Care High User List**
 - 10 practice sites – average 124 patients monthly, evolving team practices
- 2. Saint Joseph's Health Centre Top 20 ED High Users**
 - 10 ED huddles engaging 12 partners and 6 primary care physicians
 - Growing partnerships internally and externally
- 3. High Park Coordinated Care Team/Toronto Community Housing Cross-sector Partnership**
- 4. Coordinated Care Management Community of Practice**
 - 12 partners with 52 participants on BASECAMP platform

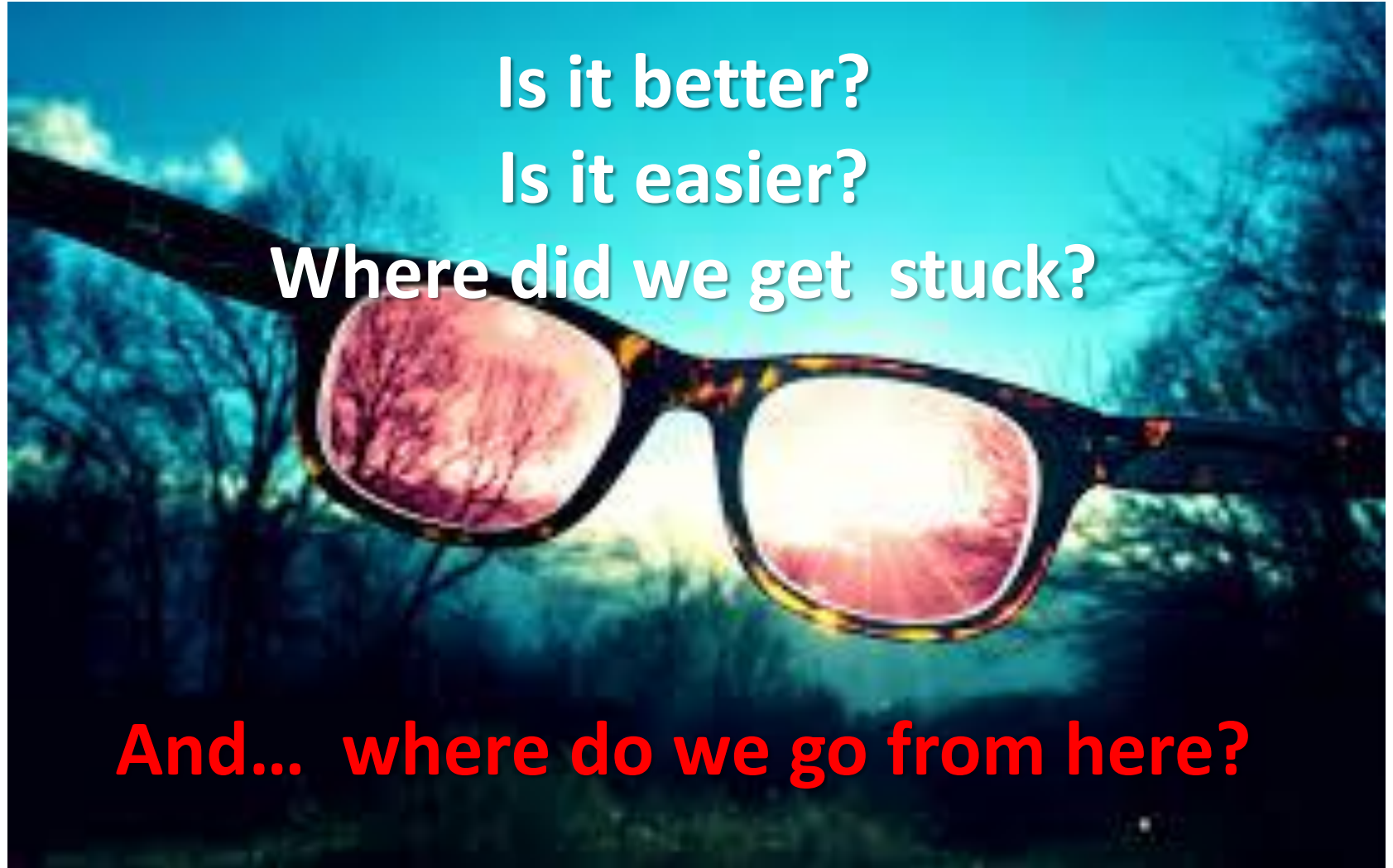
3 Simple Questions

Is it better?

Is it easier?

Where did we get stuck?

And... where do we go from here?



Looking Ahead – Going Local

Alignment Principles

- Coordination of care as an intervention within all primary care projects
- Health Links alignment with broader LHIN transformation and regional standardization

1. Saint Joseph's Health Centre Primary Care High User List	6. Family Health Organization Position Analysis
2. Top 50 Highest Users of the Emergency Department	7. Solo Physician Supports and Tests of Change
3. Transitional Care Coordination Team	8. Mental Health Worker Access
4. My Chart Expansion	9. Specialist and Diagnostic Imaging Access (SCOPE)
5. Interprofessional Team Access (Telemedicine TIP, SPIN-CHC)	10. Local Continuing Medical Education Sessions